



# LEXINGTON ESTATES



LOT	MODEL	BED / BATH / GARAGE	Home SQ FT	Lot SQ FT	PRICE
1	Randolph	4 bed • 2.5 bath • 2 car	2445	7210	\$299,950
2	Jaxon	4 bed • 2.5 bath • 2 car	2323	7220	\$296,950
3	Whitmore	3 bed • 2.5 bath • 2 car	2179	7740	\$289,950

Norris Homes reserves the right to make changes to specifications and features without notice. All marketing materials are examples, and not deemed a warranty of any kind. Square footages are approximate. Prices and availability subject to change without notice. Specifications may vary amongst home collections and communities. Last Update 12/30/2009.

### Norris Homes Feature Highlights include:

30 year architectural composition roofing, large master suites with over sized walk-in closets, 30" tall upper recessed panel cabinets, classic hand painted millwork, handsome architectural details with traditional Craftsman influence, decorative shingles or board and batten accents, dual-pane, insulated JELD-WEN windows, Kenmore black appliances, and traditional designer-selected lighting fixtures. Contact Corinne Lombardo for more information.

### Randolph Floor Plan Photos



## Corinne Lombardo

(253) 661-5264

[cnorrishomes@windermere.com](mailto:cnorrishomes@windermere.com)

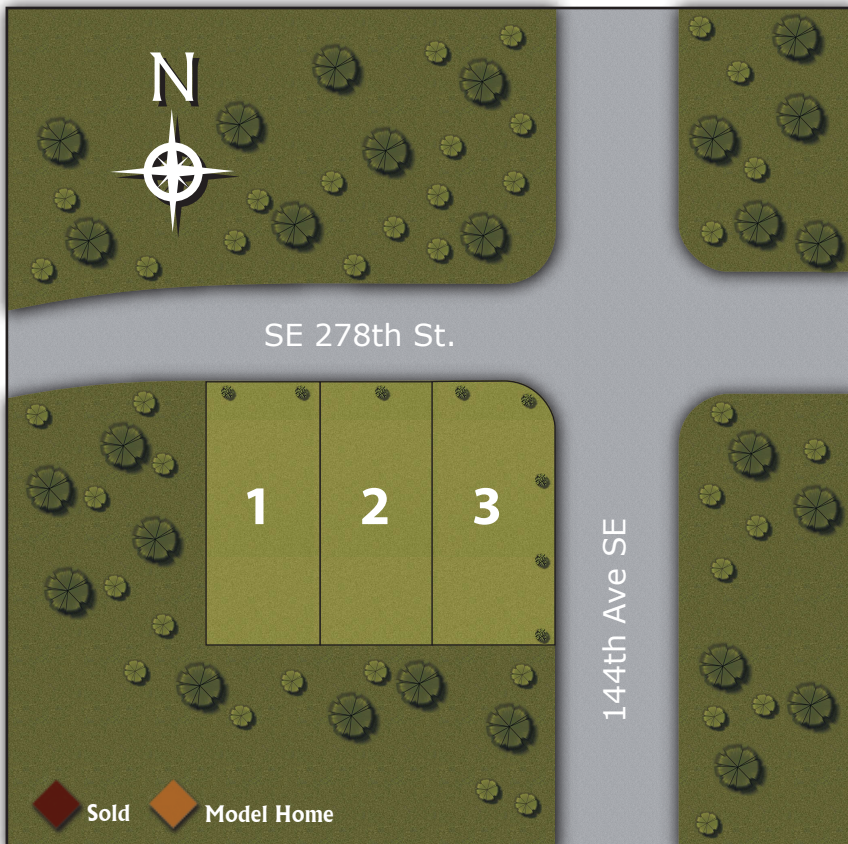
### Community Features:

- Close to Lake Meridian.
- Easy access to Highway 18.
- Within walking distance of Horizon Elementary.
- Minutes away from downtown Covington.
- **\$1,000 Buyer Bonus** with use of preferred lender.

### Driving Directions To:

SE 278th St. & 144th Ave SE  
Kent, WA 98042

Southbound I-405, take Exit 2A.  
Merge onto WA-167 S toward Kent/ Auburn.  
Take the 84th Ave S/N Central Ave exit.  
Turn left on 84th Ave St.  
Continue onto Central Ave N.  
Turn left on E Smith St.  
Continue onto Canyon Dr/SE Kent Kangley Rd.  
Continue onto SE 256th St.  
Slight right at SE Kent Kangley Rd.  
Continue onto SE 272nd St.  
Turn right at 144th Ave SE



[www.NorrisHomesInc.com](http://www.NorrisHomesInc.com)